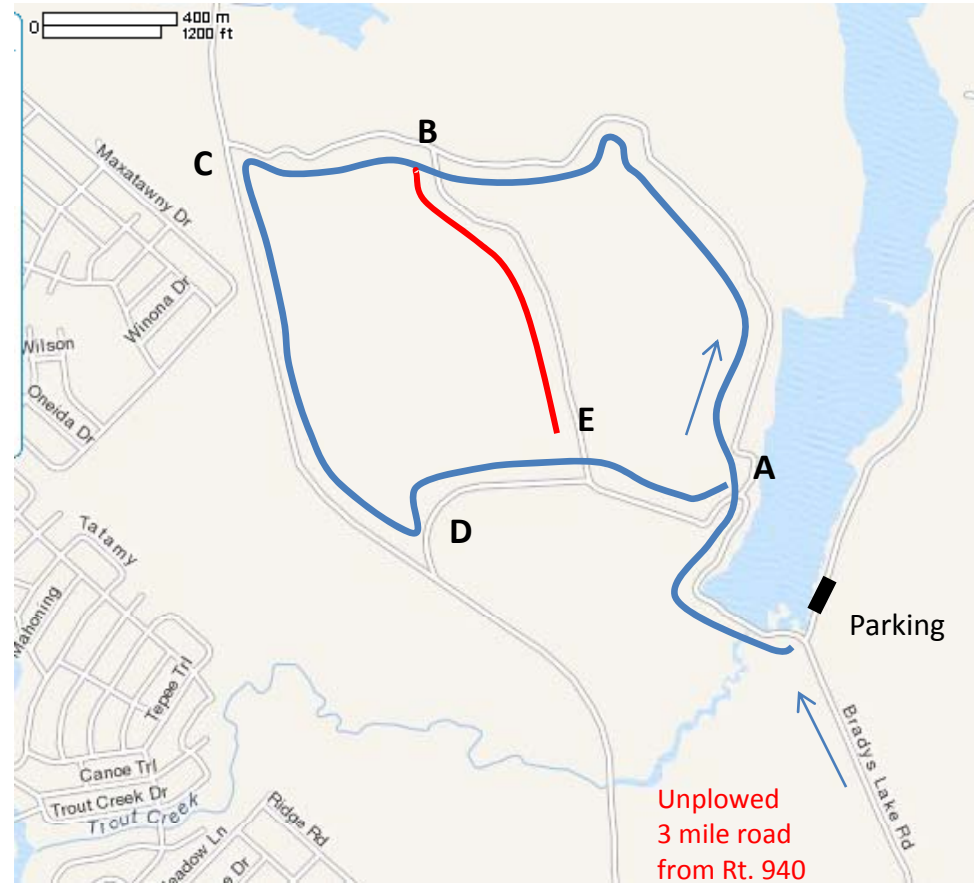


Brady's Lake Ski Trip

This trip is a bit more adventurous but is well worth the extra planning. The access road from Rt. 940 is marked with a small sign and the road is unplowed but hardpacked from the many trucks/SUVs that drive to the lake to ice fish. Best with AWD but many cars and vans make it in easily – except with new snow > ~6 inches.

Ski across the new dam (Blue trail) to trail junction A and turn right on the trail along the lake. The trail veers away from lake and rises up slightly. If a snowmobile (not really allowed) has broken trail skiing is easy and the trail is obvious. Best to continue to C and turn left onto an old railroad grade. Follow the RR grade to D where the trail will switch back left. Don't take earlier dead end trails or continue on the RR grade. At E go straight unless you want to do an extra loop and enjoy the hardwood forest trail (Red Trail -> E, B, C, D, A). At A, you can return to the car on the trail or cut across the frozen lake (if fishermen are present) to the Parking Lot.

This is very scenic trail in the large PA SGL #127 tract. You will feel miles from civilization and will see a wide variety of habitats. Mostly flat but with some coasting downslopes. The Blue loop is about 3 miles so if you're distance training you can do it multiple times. Great striding if a couple snowmobiles have been through and skating is also possible in many sections.



Directions: PA turnpike NE extension to Pocono exit, east on Rt 940 past Blakesley, look for small sign for Bradys Lake on the left. Check for how deep the snow is on the access road – you'll know if the road is passable in the first quarter mile.